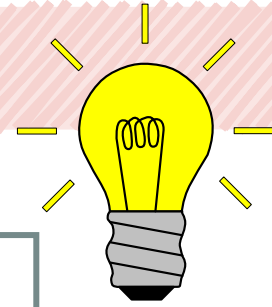




## Chapter 4

### Grammar section

#### Superlative Adjectives



💡 Edward: „This is **the worst** place I have ever seen.“

*Superlative adjectives are used to compare one thing with two or more other things. We use it to describe the quality compared to others in a group.*

#### Structure:

> Adjectives with one syllable:

— We add **-est**

hard - **the hardest**  small - **the smallest**

> Adjectives with one syllable ending in **-e**:

— We add **-st**.

wide - **the widest**  large - **the largest**

> Short adjectives end in a vowel + consonant:

— We double the consonant and add **-est**.

fit - **the fittest**  big - **the biggest**

> Adjectives with two syllables end in **-y**:

— We change **-y** to **-i** and add **-est**.

happy - **the happiest**  muddy - **the muddiest**

> Adjectives having two or more syllables:

— We use **most** before the adjective

beautiful - **the most** beautiful  amazing - **the most** amazing

*Be careful or irregular comparative forms:*

far - **the farthest** | **furthest**  good - **the best**  bad - **the worst**



## AB: Chapter 4

English Literature R 7

### Chapter 4



Read chapter 4 (pages 25 - 30)

#### ① Questions

Answer the following questions in complete sentences.

1. Who stood on both sides of the steps?

---

---

2. Who was waiting at the Guildhall?

---

---

3. What did John Canty do to Edward because he didn't bring home any money?

---

---

4. Where is Miles Hendon going to?

---

---

#### ① Match the words

Match each word with its opposite.

- |              |            |
|--------------|------------|
| beautiful ●  | ○ poor     |
| happy ●      | ○ short    |
| frightened ● | ○ ugly     |
| loud ●       | ○ sad      |
| dark ●       | ○ new      |
| old ●        | ○ quiet    |
| rich ●       | ○ friendly |
| long ●       | ○ brave    |
| angry ●      | ○ light    |

