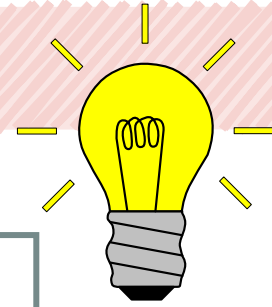




Chapter 4

Grammar section

Superlative Adjectives



💡 Edward: „This is **the worst** place I have ever seen.“

Superlative adjectives are used to compare one thing with two or more other things. We use it to describe the quality compared to others in a group.

Structure:

> Adjectives with one syllable:

— We add **-est**

hard - **the hardest** small - **the smallest**

> Adjectives with one syllable ending in **-e**:

— We add **-st**.

wide - **the widest** large - **the largest**

> Short adjectives end in a vowel + consonant:

— We double the consonant and add **-est**.

fit - **the fittest** big - **the biggest**

> Adjectives with two syllables end in **-y**:

— We change **-y** to **-i** and add **-est**.

happy - **the happiest** muddy - **the muddiest**

> Adjectives having two or more syllables:

— We use **most** before the adjective

beautiful - **the most** beautiful amazing - **the most** amazing

Be careful or irregular comparative forms:

far - **the farthest** | **furthest** good - **the best** bad - **the worst**



AB: Chapter 4

English Literature R 7

Chapter 4



Read chapter 4 (pages 25 - 30)

① Questions

Answer the following questions in complete sentences.

1. Who stood on both sides of the steps?

2. Who was waiting at the Guildhall?

3. What did John Canty do to Edward because he didn't bring home any money?

4. Where is Miles Hendon going to?

① Match the words

Match each word with its opposite.

- | | |
|--------------|------------|
| beautiful ● | ○ poor |
| happy ● | ○ short |
| frightened ● | ○ ugly |
| loud ● | ○ sad |
| dark ● | ○ new |
| old ● | ○ quiet |
| rich ● | ○ friendly |
| long ● | ○ brave |
| angry ● | ○ light |

