

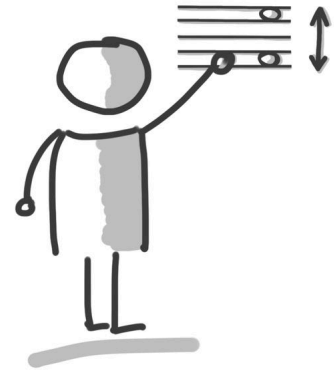


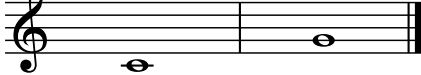
# AB: Intervalle schreiben

Musik JMLA Bronze

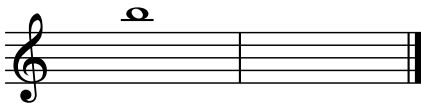
## ① Grobbestimmung Intervalle

Zeichne die fehlende Note, damit das Intervall entsteht.  
Achte auf die **vorgegebene Richtung** in der Klammer.




① 

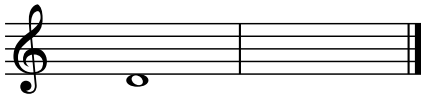
\_\_\_\_\_  
Quinte (aufwärts)

② 


\_\_\_\_\_  
Septime (abwärts)

③ 

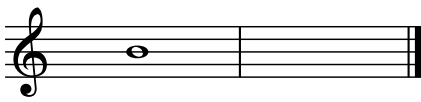
\_\_\_\_\_  
Terz (aufwärts)

④ 


\_\_\_\_\_  
Quarte (aufwärts)

⑤ 


\_\_\_\_\_  
Sekunde (abwärts)

⑥ 


\_\_\_\_\_  
Oktave (abwärts)

⑦ 

\_\_\_\_\_  
Sexte (aufwärts)

⑧ 

\_\_\_\_\_  
Quinte (aufwärts)

⑨ 

\_\_\_\_\_  
Terz (abwärts)

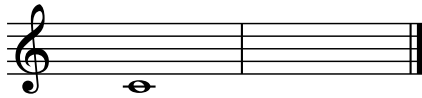




# AB: Intervalle schreiben

Musik JMLA Bronze

10



Prime

11



Quarte (abwärts)

12



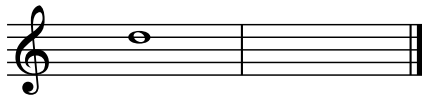
Oktave (aufwärts)

13



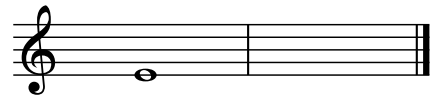
Sexte (abwärts)

14



Terz (aufwärts)

15



Sekunde (aufwärts)

16



Quinte (abwärts)

17



Quarte (aufwärts)

18



Septime (aufwärts)

19



Sexte (abwärts)

