

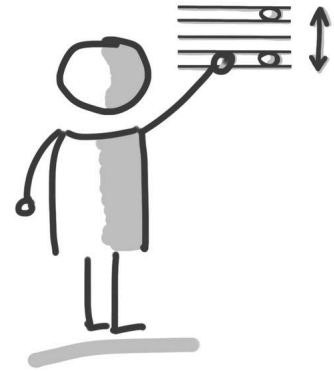


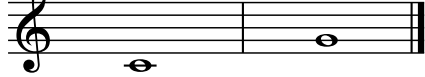
AB: LÖSUNG: Intervalle schreiben

Musik JMLA Bronze

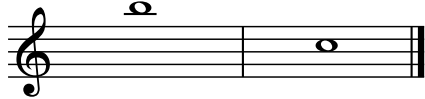
① Grobbestimmung Intervalle

Zeichne die fehlende Note, damit das Intervall entsteht.
Achte auf die **vorgegebene Richtung** in der Klammer.




① 


Quinte (aufwärts)

② 


Septime (abwärts)

③ 

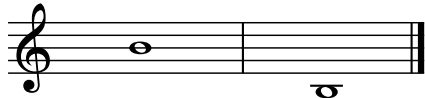
Terz (aufwärts)

④ 

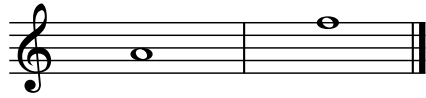
Quarte (aufwärts)

⑤ 

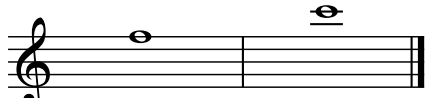
Sekunde (abwärts)

⑥ 

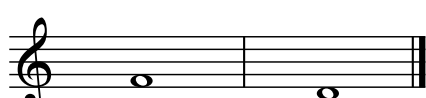
Oktave (abwärts)

⑦ 

Sexte (aufwärts)

⑧ 

Quinte (aufwärts)

⑨ 

Terz (abwärts)



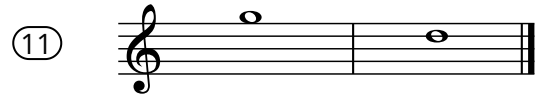


AB: LÖSUNG: Intervalle schreiben

Musik JMLA Bronze



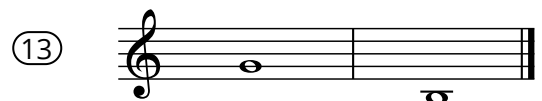
Prime



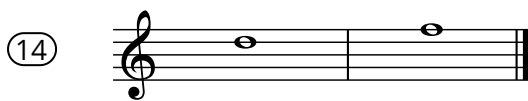
Quarte (abwärts)



Oktave (aufwärts)



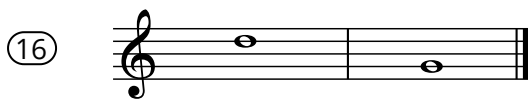
Sexte (abwärts)



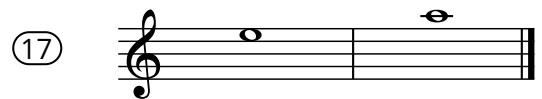
Terz (aufwärts)



Sekunde (aufwärts)



Quinte (abwärts)



Quarte (aufwärts)



Septime (aufwärts)



Sexte (abwärts)

