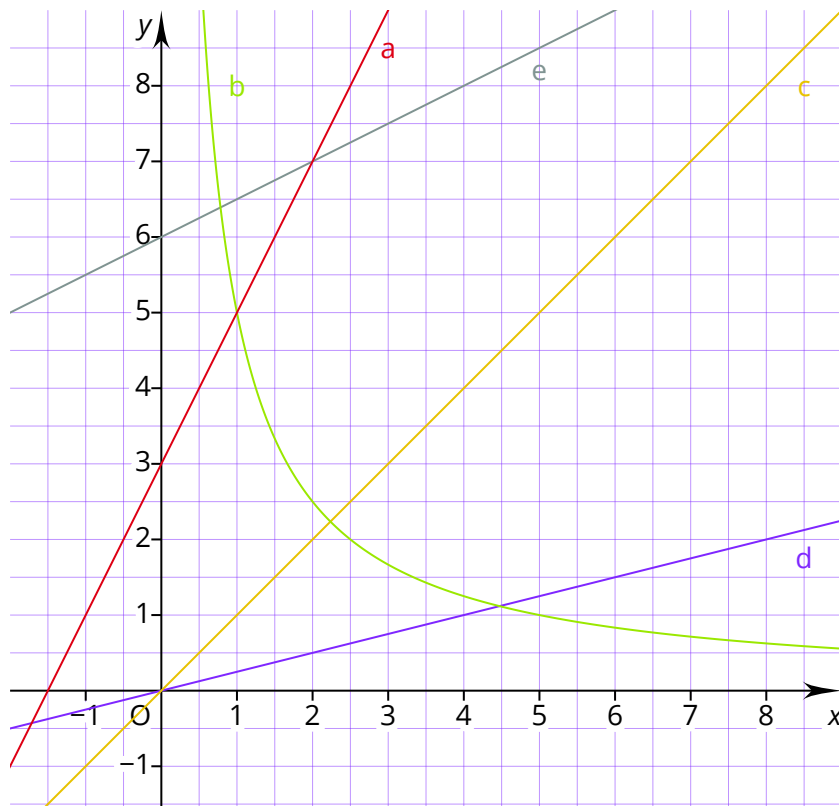


① Proportionale, antiproportionale oder Lineare Funktion? **Kreuze an.**

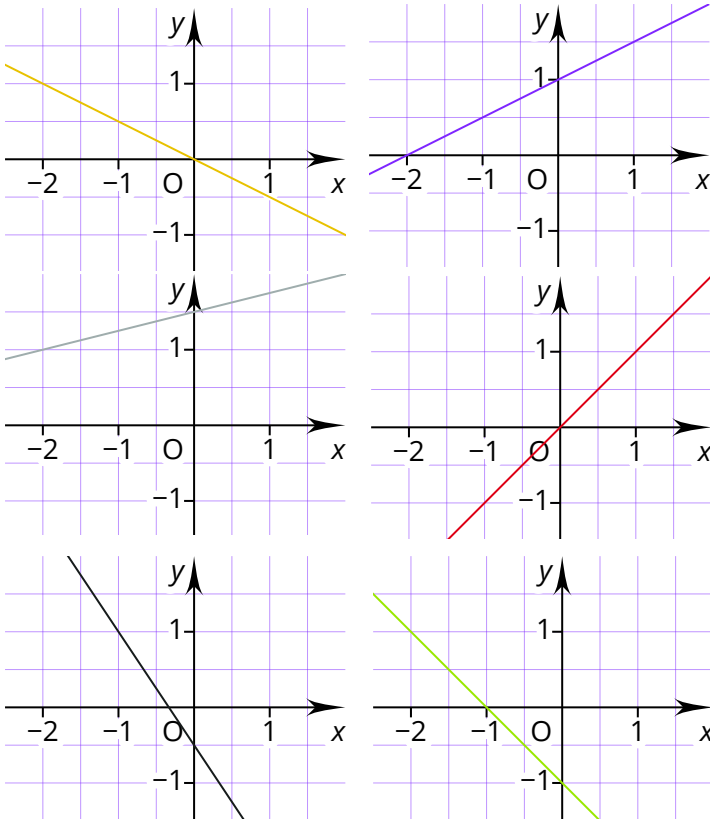
	proportional	anti-proportional	linear
$y = x + 1$	<input type="radio"/>	<input type="radio"/>	<input type="radio"/>
$y = 7 : x$	<input type="radio"/>	<input type="radio"/>	<input type="radio"/>
$y = 3,5x$	<input type="radio"/>	<input type="radio"/>	<input type="radio"/>
$y = 22x - 175$	<input type="radio"/>	<input type="radio"/>	<input type="radio"/>
$y = 8x$	<input type="radio"/>	<input type="radio"/>	<input type="radio"/>
$y = \frac{3}{5x}$	<input type="radio"/>	<input type="radio"/>	<input type="radio"/>

② Ist die **Funktion im Schaubild** proportional, antiproportional oder linear? **Kreuze an.**

	proportional	anti-proportional	linear
a	<input type="radio"/>	<input type="radio"/>	<input type="radio"/>
b	<input type="radio"/>	<input type="radio"/>	<input type="radio"/>
c	<input type="radio"/>	<input type="radio"/>	<input type="radio"/>
d	<input type="radio"/>	<input type="radio"/>	<input type="radio"/>
e	<input type="radio"/>	<input type="radio"/>	<input type="radio"/>



③ Welche **Wertetabelle** gehört zu welchem **Schaubild**?  
**Male** die Wertetabelle in der zugehörigen Farbe an.



x	-2	-1	0	1	2
y	1	0	-1	-2	-3

x	-2	-1	0	1	2
y	0	0,5	1	1,5	2

x	-2	-1	0	1	2
y	1	0,5	0	-0,5	-1

x	-2	-1	0	1	2
y	2,5	1	-0,5	-2	-3,5

x	-2	-1	0	1	2
y	1	1,25	1,5	1,75	2

x	-2	-1	0	1	2
y	-2	-1	0	1	2

④ Welche **Wertetabelle** gehört zu welcher **Funktionsgleichung**? **Verbinde richtig**.

x	-2	-1	0	1	2
y	9	7	5	3	1

x	-2	-1	0	1	2
y	-9	-7	-5	-3	-1

x	-2	-1	0	1	2
y	5	6	7	8	9

x	-2	-1	0	1	2
y	-9	-8	-7	-6	-5

x	-2	-1	0	1	2
y	3	2	1	0	-1

- $y = x - 7$
- $y = x + 7$
- $y = -x + 1$
- $y = -2x + 5$
- $y = 2x - 5$